

Map Direction

Map Scale

Feet
0 50 100

Legend

- Property
- Public Right-Of-Way
- Private Right-Of-Way
- Railroad Right-Of-Way
- Building - MassGIS
- Lake, Pond, or River

19-3 (Example) Parcel ID Map-Block
2 Ac (Example) Land Area in Acres

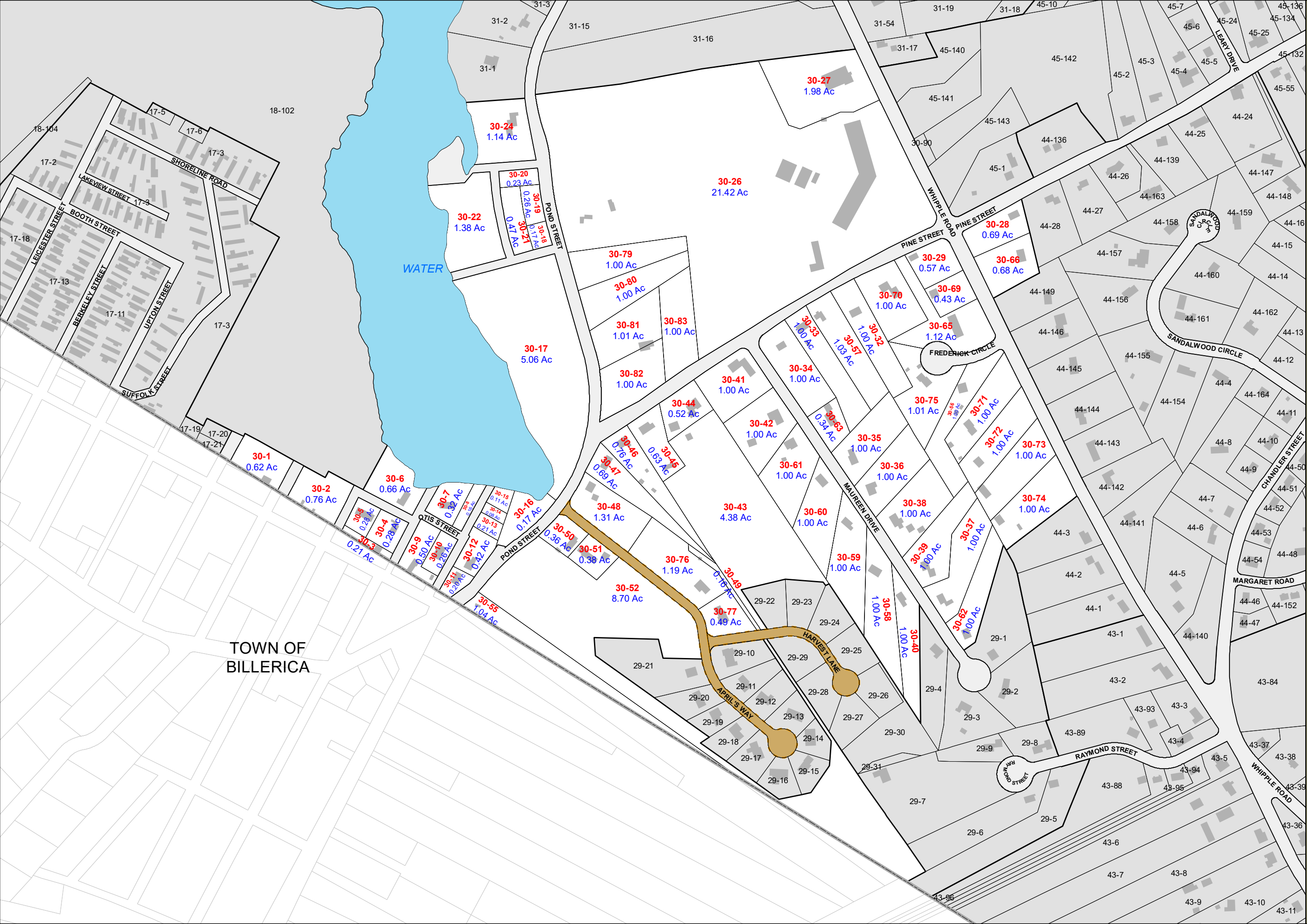
CGIS MAPPING, LLC
143 Front Street, Suite 863
Marion, MA 02738
Phone: (508) 916-7795
www.cgismapping.com

Disclaimer
This map is for assessment and planning purpose only. It is not intended to be used for description, conveyance, authoritative definition of legal boundary, or property title. This is not a survey product. Users are encouraged to examine the documentation or metadata associated with the data on which this map is based for information related to its accuracy, date of creation and limitations.
PDF file created on 10/19/2022

TOWN OF TEWKSBURY
Massachusetts

Fiscal Year
2023

Tax Map
30



TOWN OF
BILLERICA

WATER

Parcel IDs and Acreages:

- 30-1: 0.62 Ac
- 30-2: 0.76 Ac
- 30-3: 0.28 Ac
- 30-4: 0.28 Ac
- 30-5: 0.28 Ac
- 30-6: 0.66 Ac
- 30-7: 0.32 Ac
- 30-8: 0.17 Ac
- 30-9: 0.50 Ac
- 30-10: 0.26 Ac
- 30-11: 0.26 Ac
- 30-12: 0.42 Ac
- 30-13: 0.21 Ac
- 30-14: 0.28 Ac
- 30-15: 0.11 Ac
- 30-16: 0.17 Ac
- 30-17: 5.06 Ac
- 30-18: 0.17 Ac
- 30-19: 0.17 Ac
- 30-20: 0.23 Ac
- 30-21: 0.17 Ac
- 30-22: 1.38 Ac
- 30-23: 0.47 Ac
- 30-24: 1.14 Ac
- 30-25: 0.17 Ac
- 30-26: 21.42 Ac
- 30-27: 1.98 Ac
- 30-28: 0.69 Ac
- 30-29: 0.57 Ac
- 30-30: 1.00 Ac
- 30-31: 1.00 Ac
- 30-32: 1.00 Ac
- 30-33: 1.00 Ac
- 30-34: 1.00 Ac
- 30-35: 1.00 Ac
- 30-36: 1.00 Ac
- 30-37: 1.00 Ac
- 30-38: 1.00 Ac
- 30-39: 1.00 Ac
- 30-40: 1.00 Ac
- 30-41: 1.00 Ac
- 30-42: 1.00 Ac
- 30-43: 4.38 Ac
- 30-44: 0.52 Ac
- 30-45: 0.63 Ac
- 30-46: 0.76 Ac
- 30-47: 0.69 Ac
- 30-48: 1.31 Ac
- 30-49: 0.16 Ac
- 30-50: 0.36 Ac
- 30-51: 0.38 Ac
- 30-52: 8.70 Ac
- 30-53: 0.21 Ac
- 30-54: 0.28 Ac
- 30-55: 1.04 Ac
- 30-56: 1.00 Ac
- 30-57: 1.00 Ac
- 30-58: 1.00 Ac
- 30-59: 1.00 Ac
- 30-60: 1.00 Ac
- 30-61: 1.00 Ac
- 30-62: 1.00 Ac
- 30-63: 0.34 Ac
- 30-64: 1.00 Ac
- 30-65: 1.12 Ac
- 30-66: 0.68 Ac
- 30-67: 1.00 Ac
- 30-68: 1.00 Ac
- 30-69: 0.43 Ac
- 30-70: 1.00 Ac
- 30-71: 1.00 Ac
- 30-72: 1.00 Ac
- 30-73: 1.00 Ac
- 30-74: 1.00 Ac
- 30-75: 1.01 Ac
- 30-76: 1.19 Ac
- 30-77: 0.49 Ac
- 30-78: 1.00 Ac
- 30-79: 1.00 Ac
- 30-80: 1.00 Ac
- 30-81: 1.01 Ac
- 30-82: 1.00 Ac
- 30-83: 1.00 Ac
- 30-84: 1.00 Ac
- 30-85: 1.00 Ac
- 30-86: 1.00 Ac
- 30-87: 1.00 Ac
- 30-88: 1.00 Ac
- 30-89: 1.00 Ac
- 30-90: 1.00 Ac
- 30-91: 1.00 Ac
- 30-92: 1.00 Ac
- 30-93: 1.00 Ac
- 30-94: 1.00 Ac
- 30-95: 1.00 Ac
- 30-96: 1.00 Ac
- 30-97: 1.00 Ac
- 30-98: 1.00 Ac
- 30-99: 1.00 Ac
- 30-100: 1.00 Ac