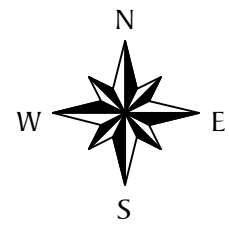


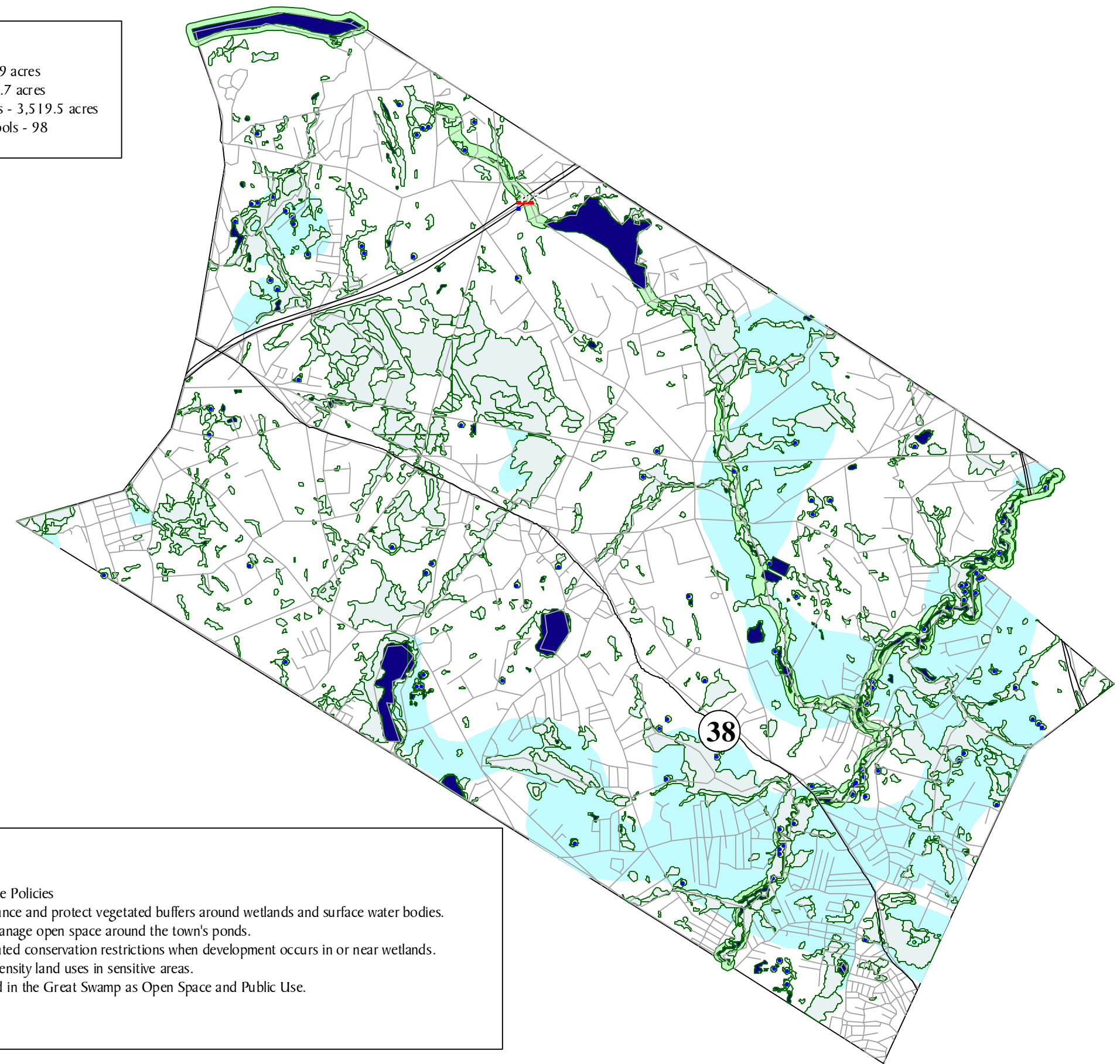
Summary Statistics
 - Wetlands - 2,787.9 acres
 - Open Water - 728.7 acres
 - Significant Aquifers - 3,519.5 acres
 - Potential Vernal Pools - 98



Tewksbury Master Plan

MAP 5
 Proposed
 Wetland & Riparian Corridor
 Overlay District

Natural & Cultural Resources



Legend

- Major Roads
- Roads
- Potential Vernal Pool
- 100' Vernal Pool Buffer
- Ponds & Lakes
- Rivers & Streams
- Wetlands
- Regulated Buffer Zones
- Significant Aquifers
- Town Boundary

Data Sources:
 MassGIS State Vector Data Library

Natural Resource Policies
 - Establish, enhance and protect vegetated buffers around wetlands and surface water bodies.
 - Acquire and manage open space around the town's ponds.
 - Require dedicated conservation restrictions when development occurs in or near wetlands.
 - Pursue low-intensity land uses in sensitive areas.
 - Reclassify land in the Great Swamp as Open Space and Public Use.

