

# FORM B – BUILDING

MASSACHUSETTS HISTORICAL COMMISSION  
MASSACHUSETTS ARCHIVES BUILDING  
220 MORRISSEY BOULEVARD  
BOSTON, MASSACHUSETTS 02125

Assessor's Number USGS Quad Area(s) Form Number

39 20			
-------	--	--	--

## Photograph



**Town:** Tewksbury

**Place:** (*neighborhood or village*)  
North Tewksbury

**Address:** 1503 Andover Street

**Historic Name:** Ella Flemings School

**Uses:** Present: School District Offices  
Original: One-Room School

**Date of Construction:** 1859

**Source:** Local History

**Style/Form:** Italianate

**Architect/Builder:**

**Exterior Material:**

Foundation: Granite

Wall/Trim: Clapboards

Roof: Asphalt Shingles

**Outbuildings/Secondary Structures:**

**Major Alterations** (*with dates*):

Bell Tower removed and restored.  
Addition to the East (early 20<sup>th</sup> century)  
Remodeled (20<sup>th</sup> century)

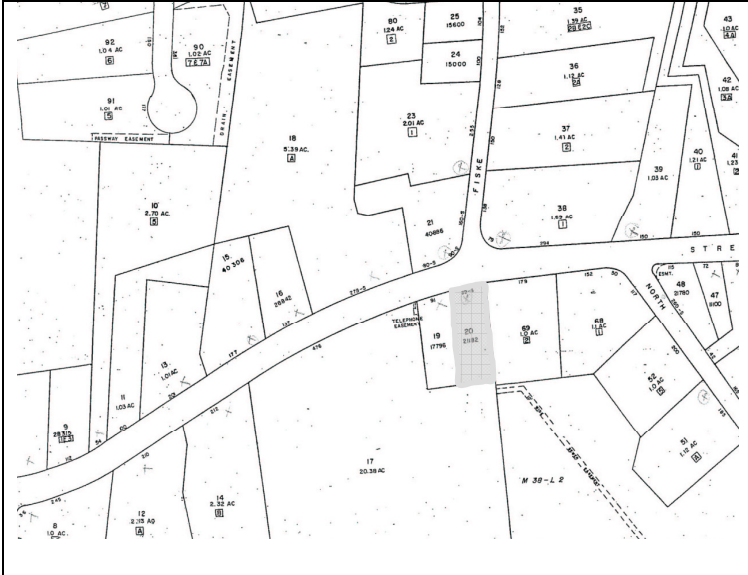
**Condition:** Fair

**Moved:** no | X | yes | | **Date** \_\_\_\_\_

**Acreage:** 0.49 Acres

**Setting:** Set close to busy Route 133 on a flat site.  
The area is predominately residential to the west, but increasingly commercial to the east towards Exit 49 on I495.

## Topographic or Assessor's Map



**Recorded by:** Julie Ann Larry

**Organization:** ttl-architects

**Date** (*month / year*): March 2010

# INVENTORY FORM B CONTINUATION SHEET

TEWKSBURY

1503 ANDOVER STREET

MASSACHUSETTS HISTORICAL COMMISSION

220 MORRISSEY BOULEVARD, BOSTON, MASSACHUSETTS 02125

Area(s) Form No.

--	--

\_\_\_ Recommended for listing in the National Register of Historic Places.

*If checked, you must attach a completed National Register Criteria Statement form.*

*Use as much space as necessary to complete the following entries, allowing text to flow onto additional continuation sheets.*

## ARCHITECTURAL DESCRIPTION:

*Describe architectural features. Evaluate the characteristics of this building in terms of other buildings within the community.*

The school building opposite Fiske Street at **1503 Andover Street** is Italianate in style, although it has been altered by subsequent additions. Character defining features include the cupola, paired arched windows, the wide corner boards, and the round central window, and the band of large rectangular 6/6 windows on the west side of the house. The original portion of the gable front school rests on a granite foundation. The walls are clad in wood clapboards. The roof forms are sheathed in asphalt shingles. The eastern entrance on the north facade was originally mirrored with an entrance on the west that was removed and replaced by a 2/2 sash window. The remaining entrance is protected by a pediment portico supported by two round columns and two round pilasters. Additions on the east side of the school are one story in height, and topped by a hip roof. Another addition at the rear has a flat roof sheathed in membrane roofing material. On the east and west side of the rear addition are secondary entrance porticos similar to the main portico on the north facade.

## HISTORICAL NARRATIVE

*Discuss the history of the building. Explain its associations with local (or state) history. Include uses of the building, and the role(s) the owners/occupants played within the community.*

The school at 1503 served District No 3, or North Tewksbury area. The small school was built in 1859 to replace an older school near the eastern corner of Andover and North Streets. The old school was sold for \$31.50. The new school was originally constructed with separate entrances on the east and west of the north facade for boys and girls in the Italianate Style. There were also separate playgrounds for boys and girls at the rear of the building.

The district school was closed in 1949 but reopened due to overcrowding from Tewksbury's rapidly growing population in 1950s. In 1964 41 students attended the Ella Flemings School. In 1970 the Dewing School was built next door to serve the areas elementary school children. The small Flemings School has been used as office space and for pre-kindergarten classes.

The school was named for Miss Ella E Flemings, born 1863 to James and Caroline C [Holt] Flemings. Miss Flemings attended school in Tewksbury and Lowell (1880s). She served as the school teacher at the District No. 3 School c1900-1912 and as the principal of the Foster School (**TEW.XXX**) in Tewksbury's central village 1912-1919. In 1900 she lived with her mother in North Tewksbury, while in 1910 she resided with her sister, Clara, the wife of George W. Trull in a house opposite the schoolhouse at 1512 Andover Street (TEW.36).

## BIBLIOGRAPHY and/or REFERENCES

- U.S. Census Records. 1790-1930.
- Directories. 1896-97, 1898-99, 1900-01, 1911-12, 1913-14, 1915-16, 1919, 1927, 1930-31, 1932-33, 1937-38, 1940-41, 1942-1943, 1949 [Ancestry], 1953, 1955, 1961, and 1967.
- Map of the Town of Tewksbury 1852. Henry F Walling. Boston, MA.
- 1865 Map of Tewkesbury with inset.
- Atlas of Middlesex County 1875. FW Beers.
- Atlas of Middlesex County 1889. Geo H Walker & Co.
- Patton, Harold J. *Ask Now of the Days that are Past*. Higginson Book Co. 1964.
- Pride, Edward W. *Tewksbury: A Short History*. 1888.
- \_\_\_\_\_. *Ye Towne Book*. Town of Tewksbury. 1934.

**INVENTORY FORM B CONTINUATION SHEET**

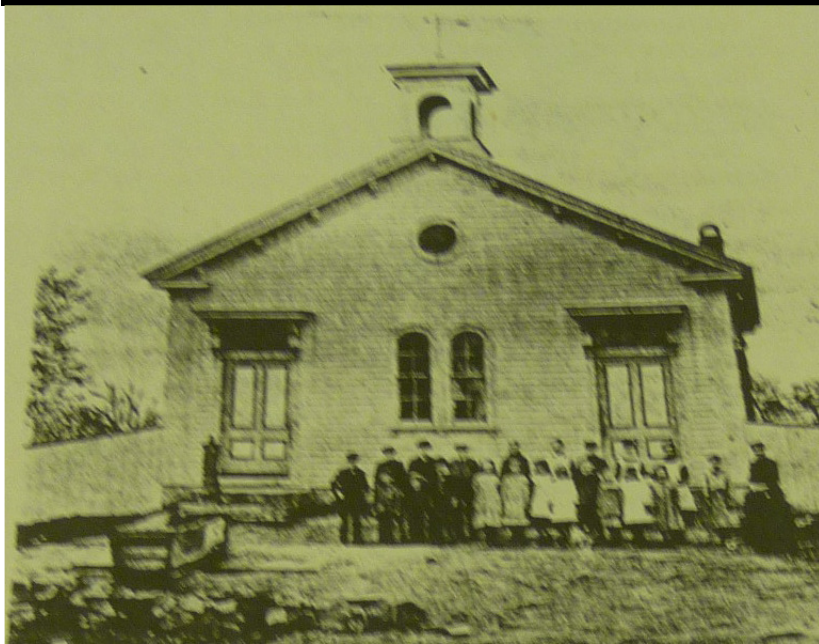
TEWKSBURY

1503 ANDOVER STREET

MASSACHUSETTS HISTORICAL COMMISSION  
220 MORRISSEY BOULEVARD, BOSTON, MASSACHUSETTS 02125

Area(s) Form No.

--	--



*Image from Ask Now of the Days that are Past.*